

HI-PRESSURE FAN

CENTRIFUGAL FAN HI-PRESSURE

Guaranteed Performance

Industrial fans are manufactured in a wide choice of sizes, arrangements and wheel types to meet air volume, pressure and temperature requirements.

Industrial fans are ruggedly built, designed for continuous duty operating under severe conditions required for material handling or exhausting hot dirty fumes or gases.

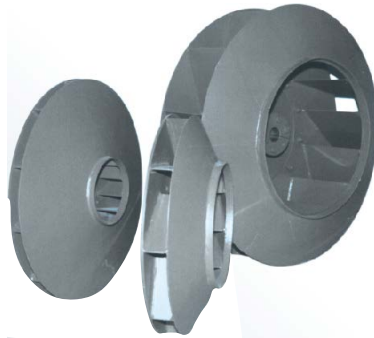
The Airotech high pressure fans are available in size from 12" to 66" with static pressure up to 60" w.c. in single stage configuration and air flow up to 50,000 CFM. Wheels are available in radial, backward Incline or backward curved options. The unit is available both in Direct Drive & Belt Drive configuration.

Self-aligning properly sized heavy duty shaft and bearings. The fan shafts are properly sized and are made of carbon steel 1040. Close tolerances are maintained where the shaft makes contact with bearings and fan wheel hub. Bearings are either ball or roller type dependent upon the size and class of fan involve. Specialized type of bearings to suite non-standard operating conditions involving temperature, extra heavy loading or other field conditions are available.

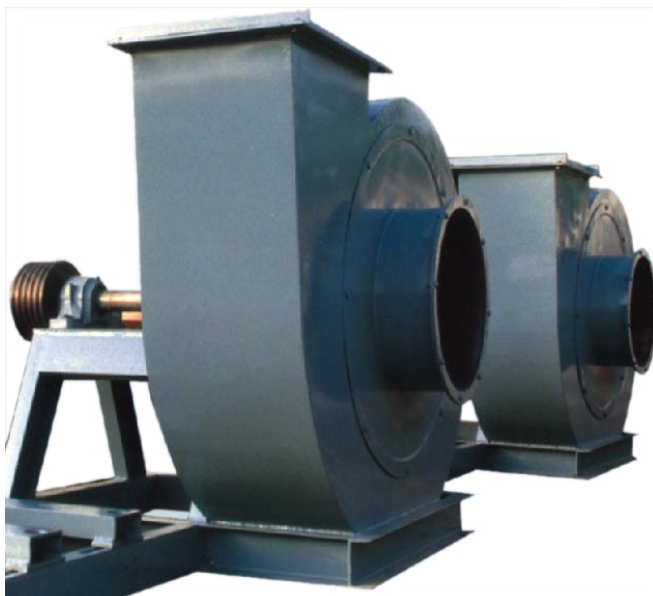
CHOICE OF IMPELLORS

There are three available types:

- Radial
- Backward Incline
- Backward curved



- **Sizes 12 to 66**
- **Static Pressure upto 60 inches in single stage**
- **100 to 50,000 CFM**
- **Available Both in Direct & Belt-Drive Configurations**
- **Sturdy Construction**
- **Guaranteed Performance**



BEARINGS

Standard bearings are heavy duty self aligning pillow block grease lubricated ball bearings. Grease or oil lubricated spherical roller bearings are also available as option. Water cooled oil lubricated ball or roller bearings are available for high temperature applications.

COOLING WHEELS

For high temperature application cooling wheel is mounted to dissipate heat from the shaft before it reaches the bearing.

ACCESS DOORS

A plate type flush bolted access doors on scroll is available as option for cleaning of wheel and dynamic balancing of fan at site.

HI-PRESSURE FAN

SELECTION CHART

Condensed Selection Chart SWSI Fans																				
CFM	S.P. 8"		S.P. 10"		S.P. 12"		S.P. 16"		S.P. 20"		S.P. 24"		S.P. 28"		S.P. 32"		S.P. 36"		S.P. 40"	
	Size	HP	Size	HP	Size	HP	Size	HP	Size	HP	Size	HP	Size	HP	Size	HP	Size	HP	Size	HP
100	15A	0.5	17A	0.5																
200	15A	0.5	17A	0.5																
300	15B	1	17B	1																
400	15B	1	17B	1																
500	15C	2	17C	2	22A	2	22B	3												
600	15C	2	17C	2	22B	3	22B	3	26a	5	26a	5								
700	15C	2	17C	2	22B	3	22B	3	26a	5	26a	5	30a	5	30b	7.5				
800	15C	2	17C	2	22B	3	22C	5	26a	5	26a	5	30b	7.5	30b	7.5	33a	10	34a	10
900	15C	2	17D	3	22C	5	22C	5	26a	5	26b	7.5	30b	7.5	30c	10	33a	10	34a	10
1000	15D	3	17D	3	22C	5	22C	5	26a	5	26b	7.5	30b	7.5	30c	10	33a	10	34b	15
1250	15D	3	17E	5	22C	5	22C	5	26b	7.5	26A	10	30c	10	30d	15	33b	15	34b	15
1500	15E	5	17E	5	22D	7.5	22D	7.5	26b	7.5	26A	10	30d	15	30d	15	33b	15	34c	20
1750	16E	5	17E	5	22D	7.5	22D	7.5	26A	10	26B	15	30d	15	30d	15	33A	20	34c	20
2000	16E	5	17E	5	22D	7.5	22E	10	26A	10	26B	15	30d	15	30A	20	33A	20	34A	25
2500	19D	7.5	17F	7.5	22E	10	22E	10	26B	15	26C	20	30A	20	30B	25	33B	25	34B	30
3000	19D	7.5	19E	10	22E	10	22F	15	26B	15	26C	20	30B	25	30B	25	33C	30	34C	40
3500	19E	10	19E	10	22F	15	22F	15	26C	20	26D	25	30B	25	30C	30	33D	40	34C	40
4000	19E	10	22F	15	22F	15	22G	20	26C	20	26D	25	30C	30	30D	40	33D	40	34D	50
4500	33C	10	36A	15	40A	15	22G	20	26D	25	26E	30	30D	40	30D	40	33D	40	34D	50
5000	33C	10	36A	15	40A	15	22G	20	26D	25	26F	40	30D	40	30E	50	33E	50	34E	60
6000	33D	15	36B	15	40B	20	26E	30	26E	30	26F	40	30E	50	30E	50	33F	60	34F	80
7000	33D	15	36C	20	40C	25	26F	40	26F	40	26G	50	30E	50	30F	60	33G	80	34F	80
8000	33E	20	36C	20	40C	25	26F	40	26F	40	30F	60	30F	60	30G	80	33G	80	34G	100
9000	33E	20	36D	25	40D	30	26G	50	26G	50	30F	60	30G	80	30G	80	33G	80	34G	100

**Individual Fan performance curve and dimension sheet is available on request.
 Shaded area performance based on 1450 RPM, others on 2880 RPM.

SPECIAL COATINGS

The standard paint on fan is enamel but special coatings i.e. epoxy or rubber chlorinated paint are available for special requirements. Coating manufacturer's surface preparation and application instructions are strictly followed.

STAINLESS STEEL FANS

Our standard construction is in mild steel but stainless steel or aluminum wheel, scroll and shaft are available.

DISCHARGE DAMPERS

Discharge dampers can be used to control air. Heavy gauge GI sheet fabricated dampers are available both in parallel and opposed blade configuration.