

HOT WATER STORAGE HEATER CALORIFIER

Grand Storage Water Heater is designed as a high quality, low maintenance, domestic/commercial water heating package and is available in both vertical and horizontal configurations. It features seamless copper tube heating element, and very accurate temperature control. Simple installation and easy servicing make the storage water heater well-suited for a wide range of residential, commercial and industrial applications including:

- Hospitals
- Colleges & Universities
- Hotels & Motels
- Residential Apartments etc.

FEATURES

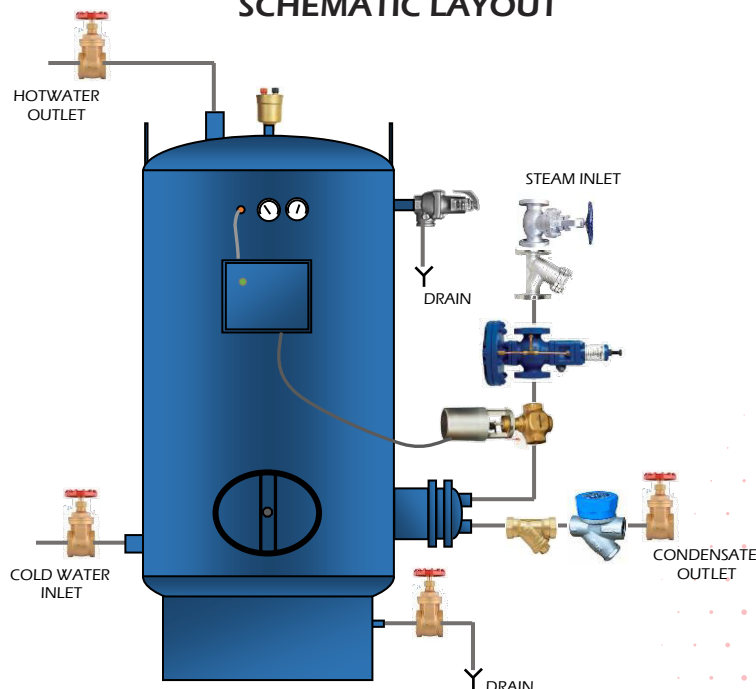
- In accordance with ASME Section VIII Div I
- Small, medium or large storage volumes
- Grade SS 400 Mild Steel Construction
- Quality components for high performance
- Completely assembled storage water heaters with heating element, circulating system, wiring, insulation and skid mounted
- Epoxy-lined tank standard
- Seamless cupro-nickel (90/10) heating element
- 50 mm Rockwool Insulation and 22 gauge GI jacketing.

CONTROL SYSTEM

- Maintains temperature ± 2 degrees from setpoint and offers maintenance free operation.
- Senses blended water temperatures for instant smooth opening and closing of steam control valve.
- Provides rapid response to the temperature and flow requirements of the cold-water supply. The temperature control sensor immediate change in the temperature of the stored water and eliminates delays.
- Eliminates excessive cycling of the control valve, which can occur when short bursts of cold water are flushed over an immersed sensor bulb.



SCHEMATIC LAYOUT



HOT WATER STORAGE HEATER CALORIFIER

HI-DRAW CAPACITY FOR PEAK LOADS

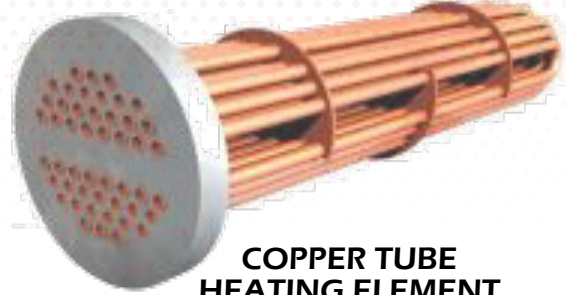
Continuous pumped circulation results in full tank of hot water. Tank coil in low portion of tank gives best heating of make-up water and gives maximum hot water storage.

PERFORMANCE

- Outlet water temperature to 185°C (203°F) Max
- 125 & 150 psig tank design
- 150 psig tube bundle design
- Proven design with over 30 years of application.

OPTIONS

- Insulating and jacketing packages (mirror finish stainless steel jacket)
- ANSI 304 Stainless steel tank construction
- 304 or 316L stainless steel tube bundle
- Microprocessor temperature controller with Bacnet MSTP output for BMS



**COPPER TUBE
HEATING ELEMENT**